

MONITORING WEATHER AND CLIMATE FROM SPACE



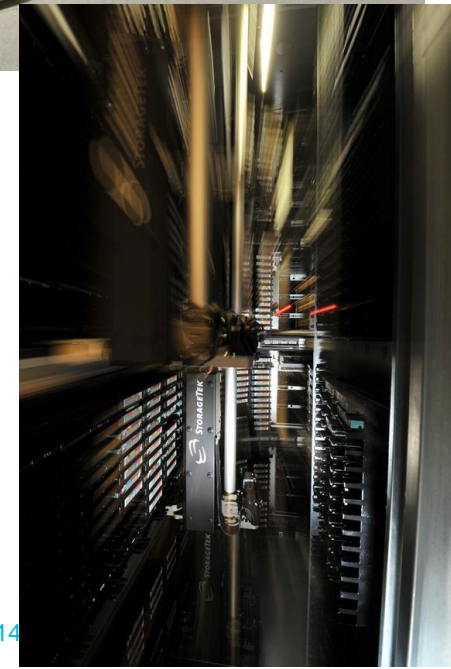
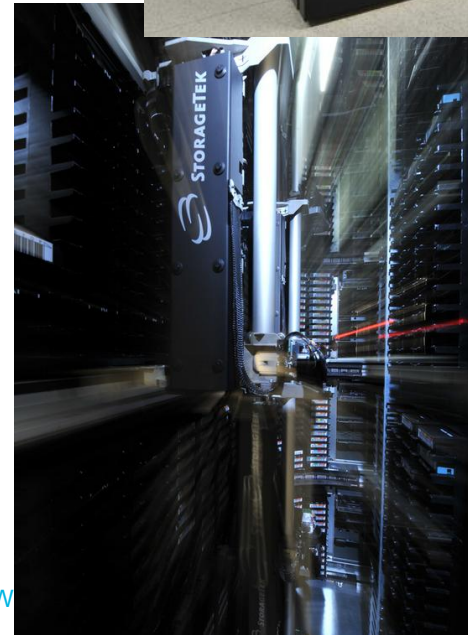
INTRODUCTION TO EUMETSAT DATA CENTRE

Kristina Petraityte
Data Centre Product Analyst



Content of Presentation

1. Overview of the Data Centre
2. Recently implemented enhancements:
 - User Ordering Feedback Mechanism
 - “Fast Track” Ordering
 - NetCDF as a new delivery format
3. Forthcoming enhancements:
 - New Web based Ordering Client
 - Hardware Upgrades
 - Reprocessed data
4. Data access



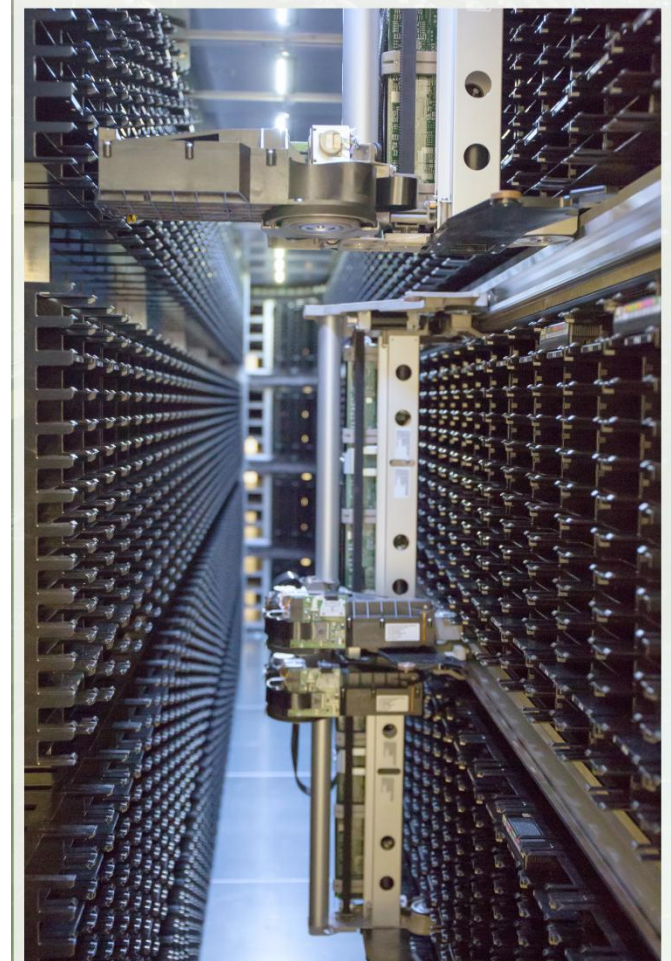
EUMETSAT Data Centre aims to:

- Guarantee a long-term preservation of data and generated products from EUMETSAT's meteorological satellites;
- Enable users to browse, make automated orders, and retrieve data from EUMETSAT's catalogue of products;



EUMETSAT Data Centre

- Set up in 1995, the Data Centre has been developed to become a state-of-the-art archive serving all EUMETSAT satellite programmes;
- With more than 150 meteorological satellite products available — in the case of Meteosat spanning a record of more than 30 years (since 1981) — the Data Centre offers one of Europe's largest and most comprehensive collections in this field.



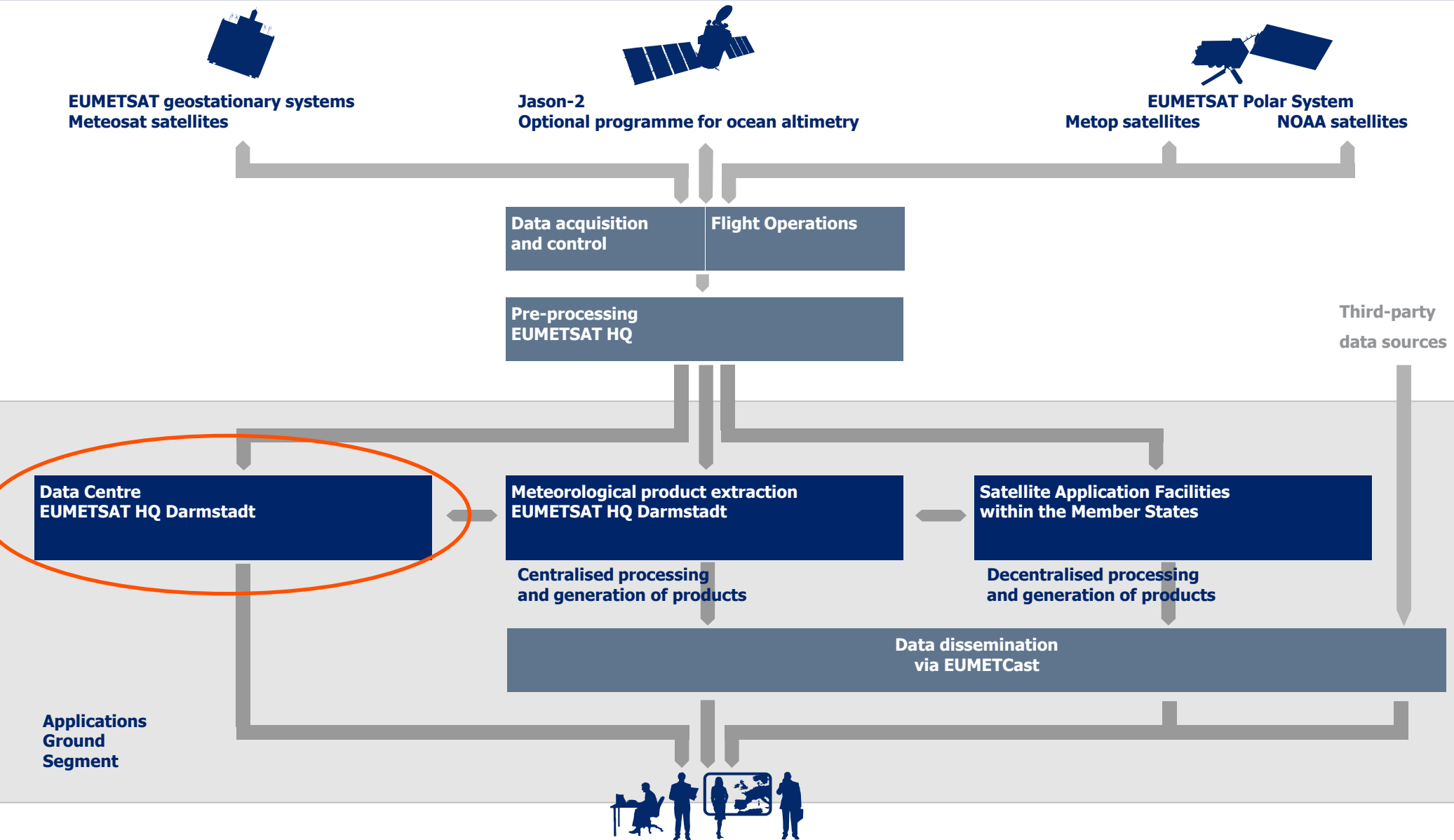
EUMETSAT Data Centre – how our colleagues see it...



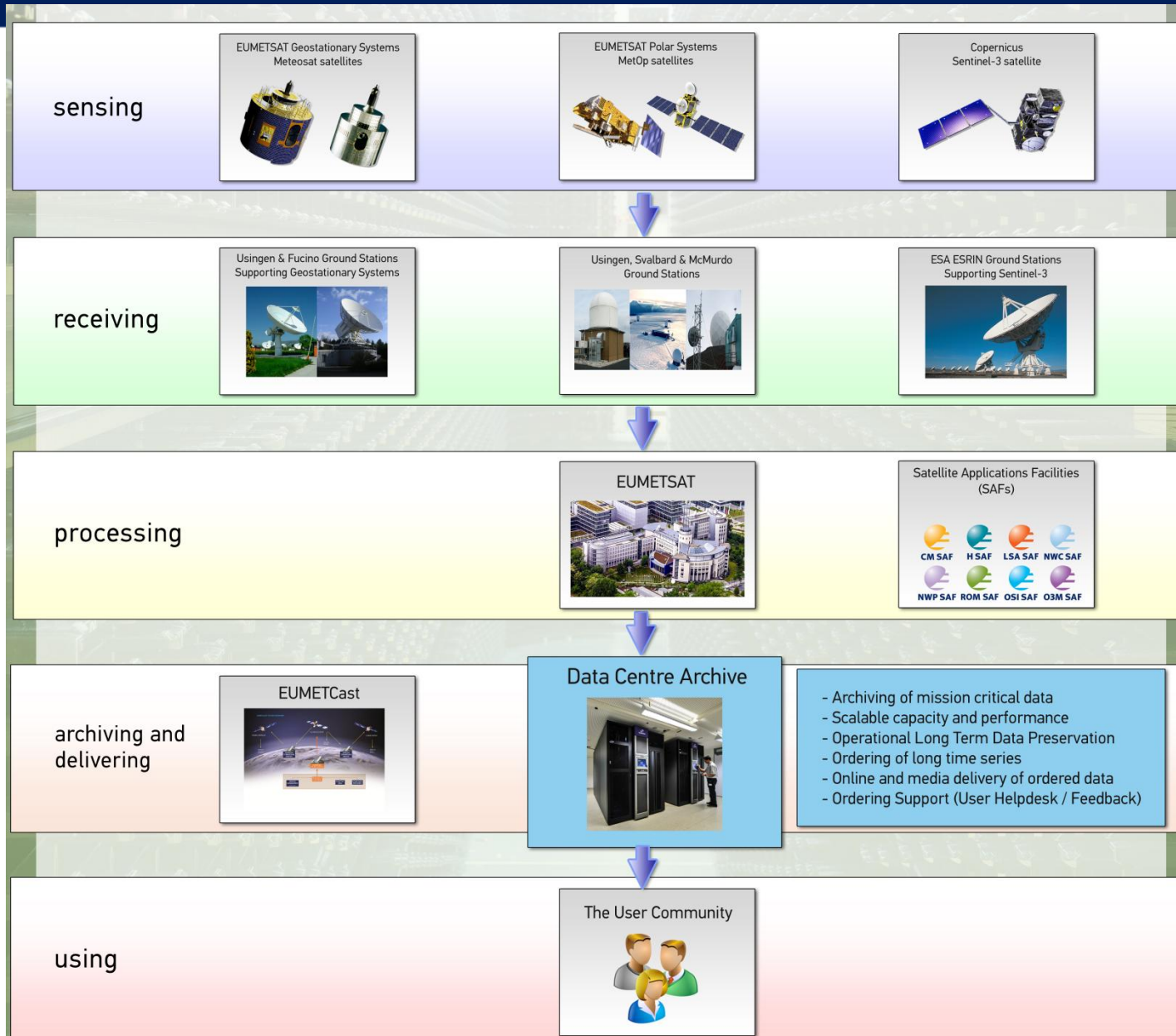
EUMETSAT Data Centre – how we see it...



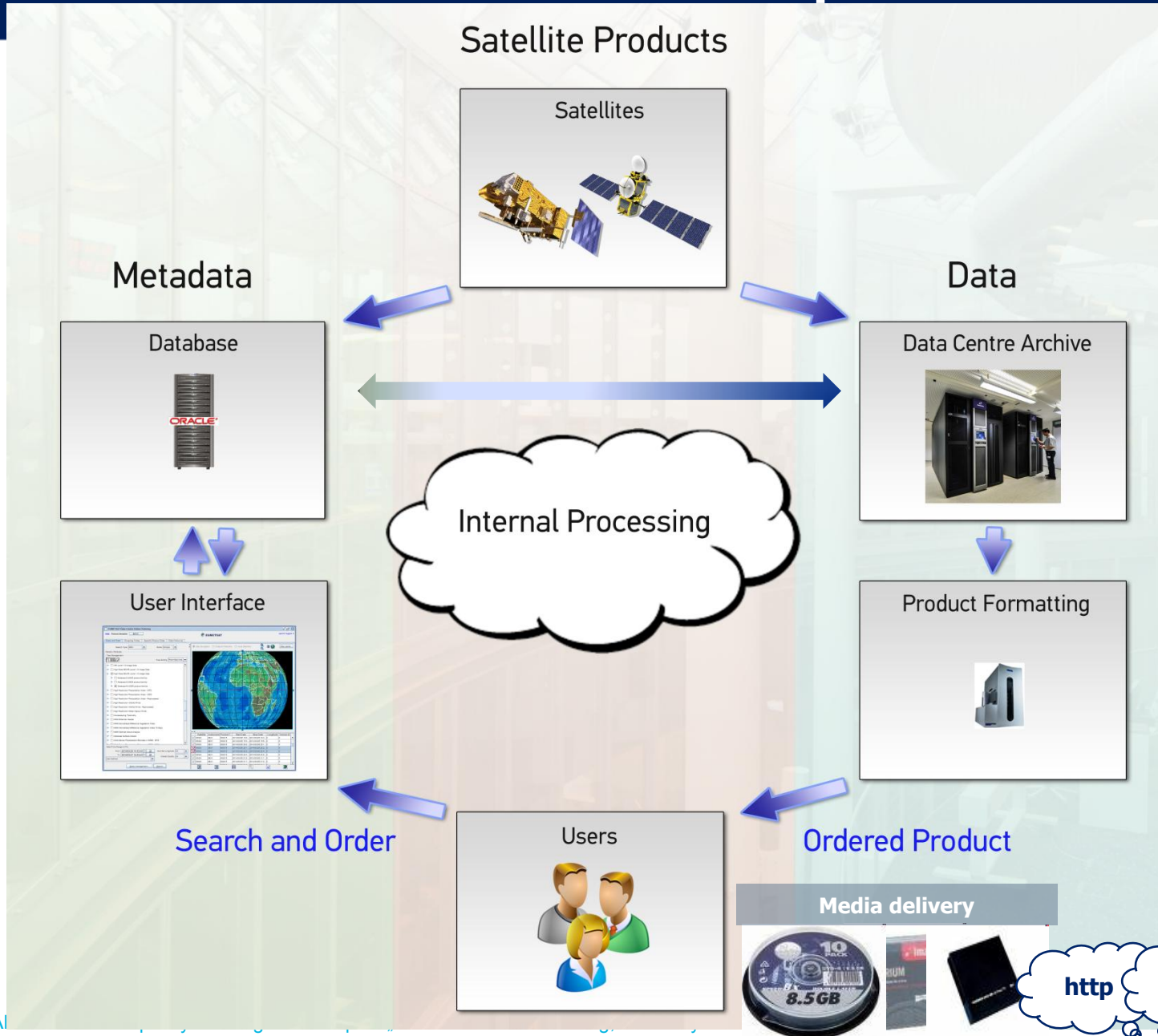
EUMETSAT Data Centre – where it is...



EUMETSAT Data Centre – what it actually is...

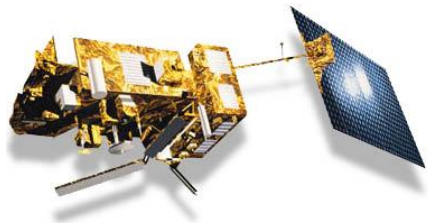


EUMETSAT Data Centre – how we present it...



Archive Data Redundancy & Data Preservation

- **Up to 3 copies** are made for each data set ingested by the Data Centre
- The first copy is created on T10K media and remains in the prime robot;
- The second copy is created on LTO-4 media to be stored off site as the backup copy;
- A third copy is created on disk for the most demanded products (MSG, MTP);
- Integrity of data sets retrieved from all media can be checked against a checksum stored in its meta-data;
- Every five years the data is migrated on new media;
- Every two years the off-site copies are re-spooled to avoid tape sticking;



**Near line archive
on Tape (1. copy)**



← 30 km →



**Offline and
offsite Archive
on tape
(2. copy)**

Data Centre – key usage figures (averages: last 2 years)

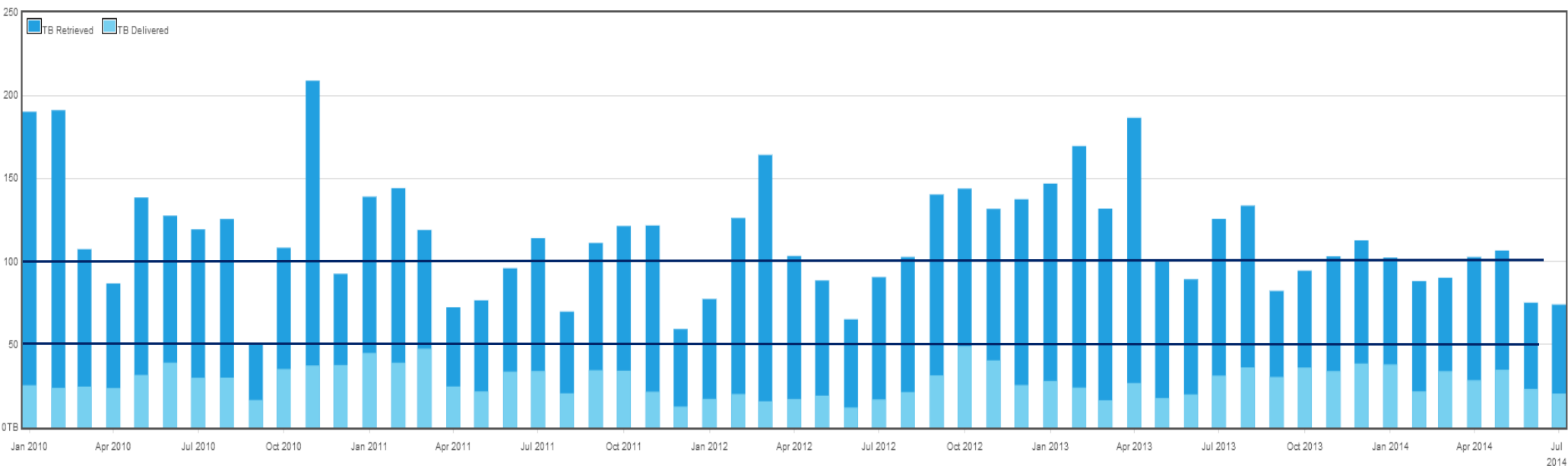
- Currently used Archive Capacity: **over 1 Petabyte**
- Number of archived files: **50,000,000**
- Ratio Ingestion (in) : Retrieval (out) **ca. 1 : 10**

- Average Retrieval Volume / month: **120 TB**
- Average Delivery Volume / month **30 TB**
- Average no. of Items processed / month **700,000**
- Delivery Online : Media (data volume) **2 : 1**
- Online : Media (user orders) **19 : 1**

- Currently registered Users: **3,000**
- Average active Users ordering / month: **200**

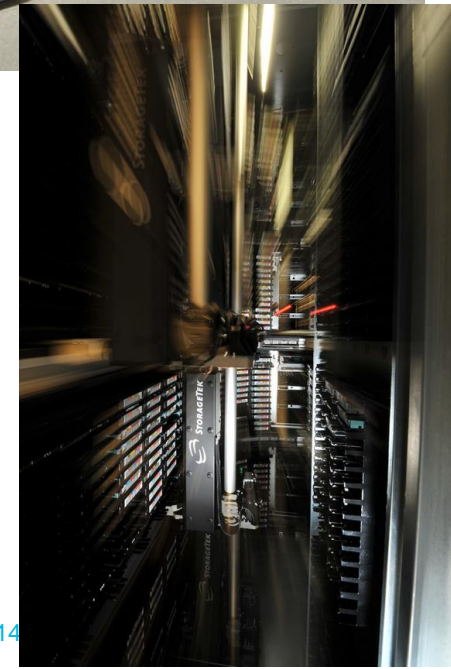
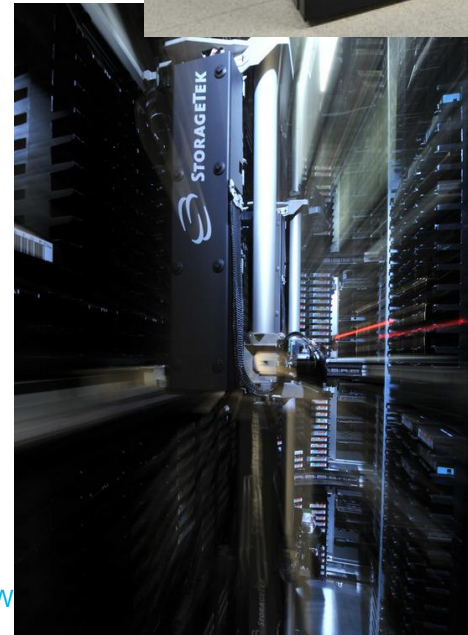
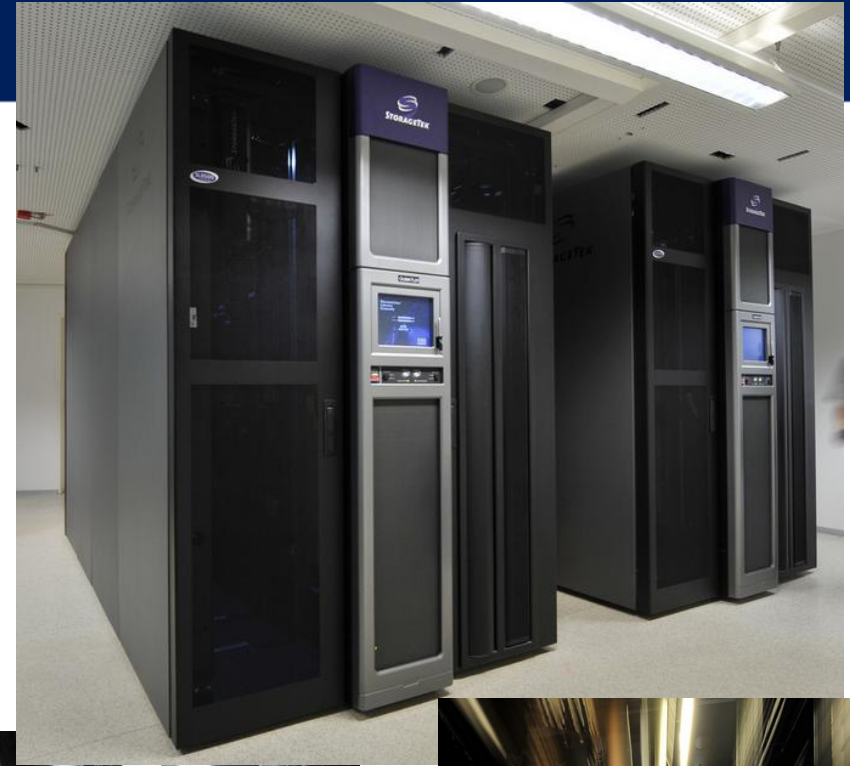
Data Centre Ordering

Ordering statistics for 2010 July – 2014 July



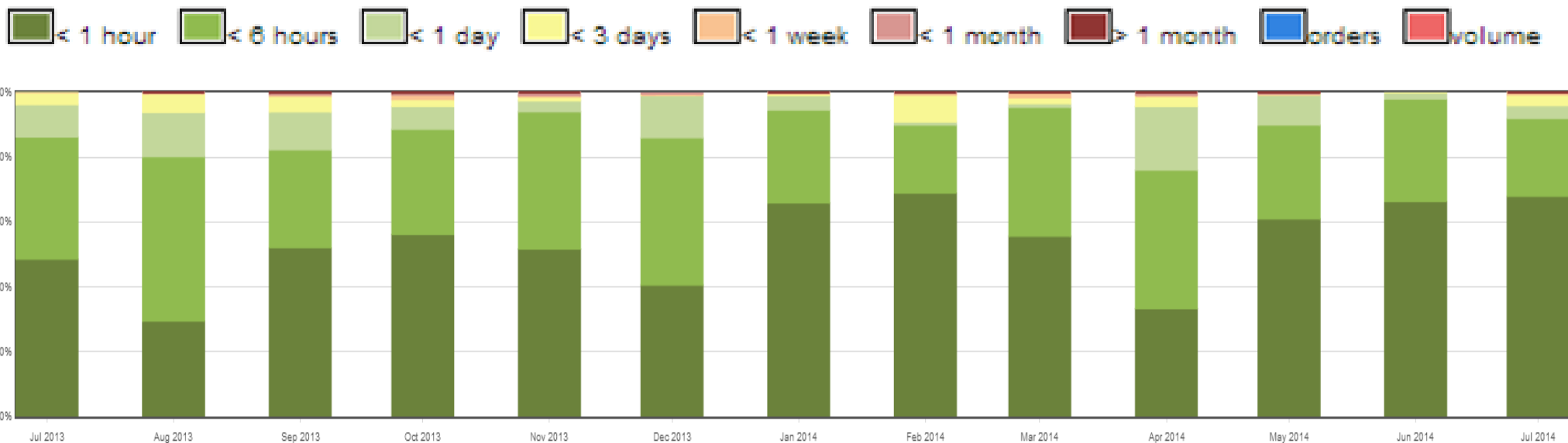
Content of Presentation

1. Overview of the Data Centre
2. **Recently implemented enhancements:**
 - **User Ordering Feedback Mechanism**
 - **“Fast Track” Ordering**
 - **NetCDF as a new delivery format**
3. Forthcoming enhancements:
 - New Web based Ordering Client
 - Hardware Upgrades
 - Reprocessed data
4. Data access



Recent Enhancements – “Fast Track” ordering

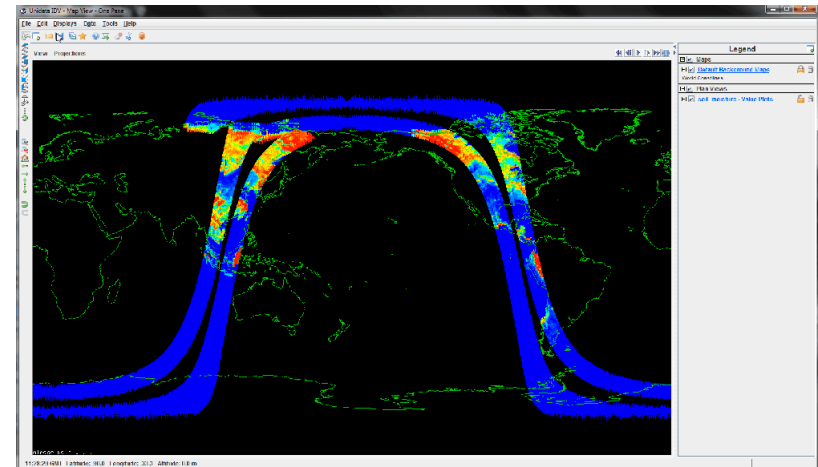
- In response to users’ feedback to improve the delivery speed of small orders;
- Small Order:
 - < 10 items
 - Delivery method: online
 - Format: no restriction



- Delivery speeds can still vary depending on the number of small orders being processed in parallel.

Recent Enhancements – NetCDF delivery format

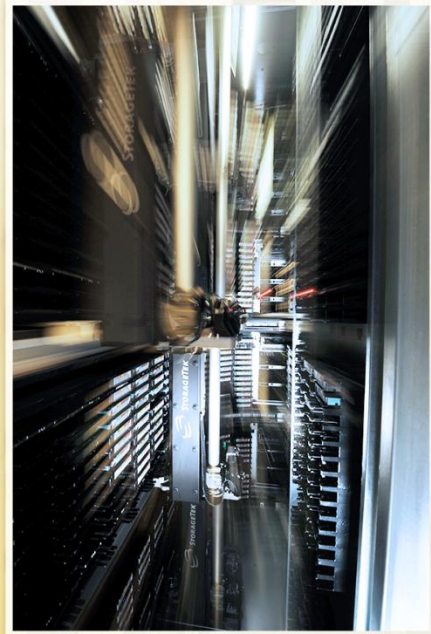
- Non-Meteorological User Community is often not very familiar with available formats (e.g. Native, BUFR, GRIB);
- NetCDF is introduced as a standard, well-accepted and easy to use delivery format for products from the Data Centre ;
- Most EPS I1 and I2 products (e.g. ASCAT, AVHRR, IASI) can now be ordered in NetCDF format;
- NetCDF is “NetCDF4 Classic”, i.e. NetCDF4 libraries with Classic Common Data Model and Climate and Forecast (CF) metadata conventions are applied;
- See Data Centre Internet page for more:



<http://www.eumetsat.int/website/home/Data/DataDelivery/EUMETSATDataCentre/NetCDFFormatforDataCentreProducts/index.html>

Recent Enhancements

EUMETSAT Data Centre Modular Library System



Archive Library Operational Environment

Oracle StorageTek SL 8500

- 3.500 tape-slots
- 28 tape drives
 - 24 x T10K-C drives +
 - 4 x LTO-4 drives
- Physical Storage:
~17,5 PBytes
- Virtual Storage:
unlimited

EUMETSAT Data Centre Modular Library System



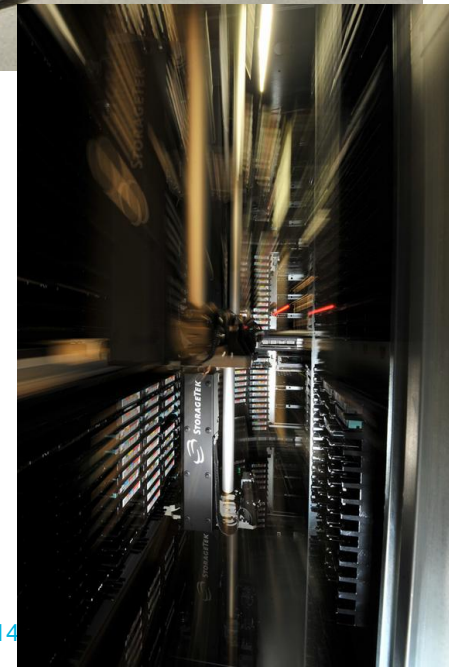
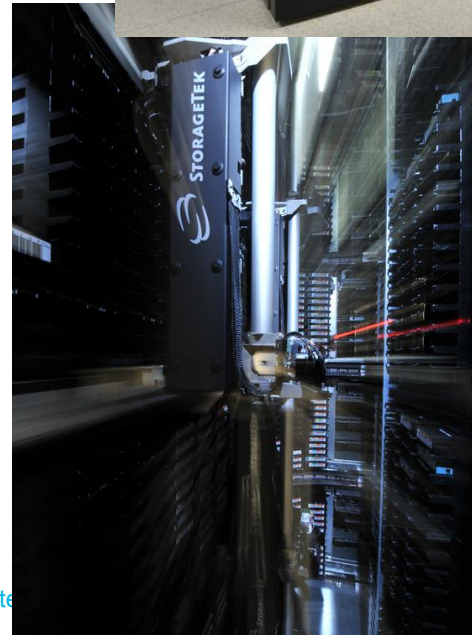
Data Centre Library Operational Environment

Oracle StorageTek SL 8500

- 10.000 tape-slots
- 28 Drive's
 - 24 x T10K-C drives +
 - 4 x LTO-4 drives
- Physical Storage:
~50 PBytes
- Virtual Storage:
unlimited

Content of Presentation

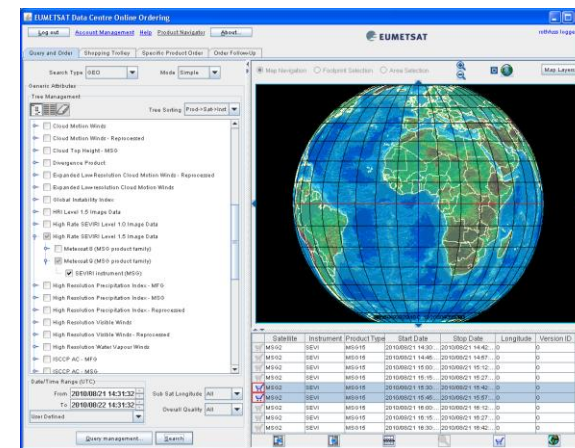
1. Overview of the Data Centre
2. Recently implemented enhancements:
 - User Ordering Feedback Mechanism
 - “Fast Track” Ordering
 - NetCDF as a new delivery format
3. Forthcoming enhancements:
 - New Web based Ordering Client
 - Hardware Upgrades
 - Reprocessed data
4. Data access



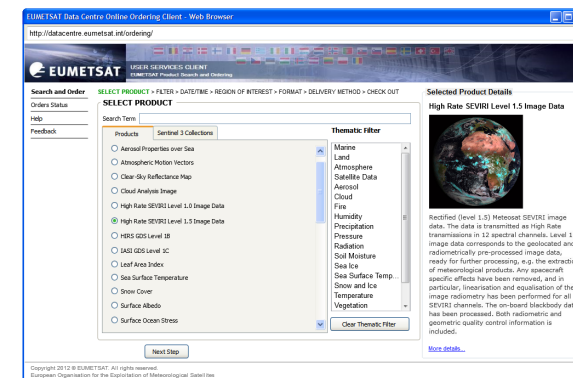
Data Centre Ordering Client Update

- Web browser based;
- Availability to users is planned for QIV 2014;
- Aim is to simplify the user interface and make it more intuitive;
- The current Java-based ordering client will still be accessible but not further evolved;
- Improvements summary:
 - The new design will guide users through ordering steps
 - Enhanced product search
 - Estimation of number of items selected + order size
 - Ordering features (e.g. ROI selection, enhanced options) only shown if applicable;

old



new



New Ordering Client: Data Centre Product Selection

EUMETSAT Data Centre Online Ordering Client - Web Browser

http://datacentre.eumetsat.int/ordering/

Control flow of the ordering process

Search and Order

Orders Status

Help

Feedback

SELECT PRODUCT > FILTER > DATE/TIME > REGION OF INTEREST > FORMAT > DELIVERY METHOD > CHECK OUT

SELECT PRODUCT

Search Term

Products

Sentinel 3 Collections

- Aerosol Properties over Sea
- Atmospheric Motion Vectors
- Clear-Sky Reflectance Map
- Cloud Analysis Image
- High Rate SEVIRI Level 1.0 Image Data
- High Rate SEVIRI Level 1.5 Image Data
- HIRS GDS Level 1B
- IASI GDS Level 1C
- Leaf Area Index
- Sea Surface Temperature
- Snow Cover
- Surface Albedo
- Surface Ocean Stress

Thematic Filter

- Marine
- Land
- Atmosphere
- Satellite Data
- Aerosol
- Cloud
- Fire
- Humidity
- Precipitation
- Pressure
- Radiation
- Soil Moisture
- Sea Ice
- Sea Surface Temp...
- Snow and Ice
- Temperature
- Vegetation

Clear Thematic Filter

Next Step

Stepwise approach

Copyright 2012 © EUMETSAT. All rights reserved.
European Organisation for the Exploitation of Meteorological Satellites

- Several product search methods are offered (text, thematic, popularity).
- Selecting a product shows product details from the EO-Portal Product Navigator.
- Simplified order processing as an order can only be made for 1 type of product.

New Ordering Client: Product Filtering

EUMETSAT Data Centre Online Ordering Client - Web Browser

http://datacentre.eumetsat.int/ordering/

EUMETSAT USER SERVICES CLIENT
EUMETSAT Product Search and Ordering

Search and Order [SELECT PRODUCT](#) > **FILTER** > DATE/TIME > REGION OF INTEREST > FORMAT > DELIVERY METHOD > CHECK OUT

Orders Status
Help
Feedback

FILTER

Satellites

All/None Satellites

Meteosat 8

Meteosat 9

Meteosat 10

Overall Quality

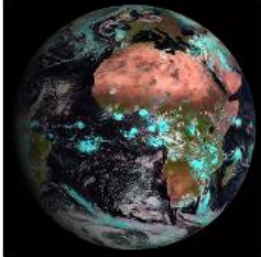
Sub Sat Longitude

Service Status

Previous Step Next Step **Go to Check Out**

Selected Product

High Rate SEVIRI Level 1.5 Image Data



Hints & Tips

Narrow your search with additional filters.

Available filters depend on type of product selected and your user privileges.

Copyright 2012 © EUMETSAT. All rights reserved.
European Organisation for the Exploitation of Meteorological Satellites

- Search can be narrowed using additional filters
- Available filters depend on type of product selected and user privileges.
- “Go to Check Out” is used to shortcut ordering process by accepting defaults.

New Ordering Client: Product Data/Time Selection

EUMETSAT Data Centre Online Ordering Client - Web Browser

http://datacentre.eumetsat.int/ordering/

EUMETSAT USER SERVICES CLIENT
EUMETSAT Product Search and Ordering

Search and Order [SELECT PRODUCT](#) > [FILTER](#) > [DATE/TIME](#) > REGION OF INTEREST > FORMAT > DELIVERY METHOD > CHECK OUT

Orders Status

Help

Feedback

SELECT DATE/TIME

From UTC until UTC

User defined

- One day
- One week
- One month
- Three months

Additional Filter

Daily Time Window

From UTC until UTC

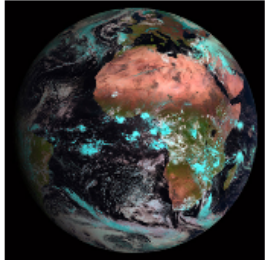
Periodic

Every day(s) h min searching data with a time window of h min

Selected Products: 96 (100 MB)

Selected Product

High Rate SEVIRI Level 1.5 Image Data



Hints & Tips

Periodic search example:

Search hourly data

Every day(s) h min
with time window of h min

A 4 minutes time window is applied around the hourly time instants in order to account for products with slightly shifting sensing times.

Green areas show which times data is being search for.

Number and size of selected products is an estimate.

Copyright 2012 © EUMETSAT. All rights reserved.
European Organisation for the Exploitation of Meteorological Satellites

- Filter the product selected using date/time range.
- Hints & Tips provide additional usability information based on users' experiences.

New Ordering Client: Region of Interest (ROI) Search

EUMETSAT Data Centre Online Ordering Client - Web Browser

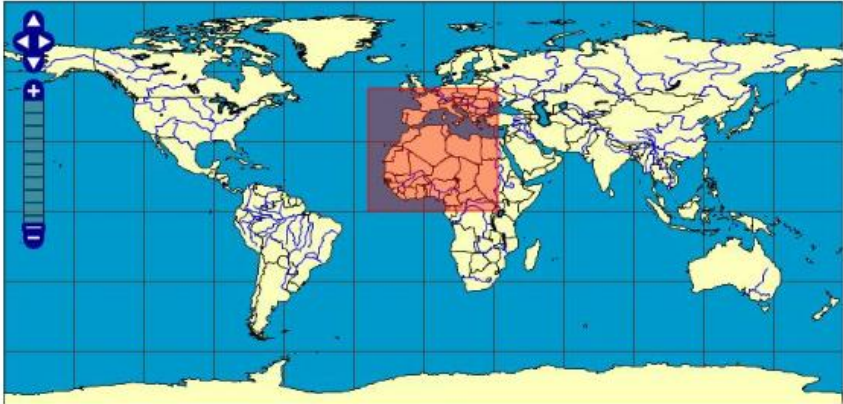
http://datacentre.eumetsat.int/ordering/

EUMETSAT USER SERVICES CLIENT
EUMETSAT Product Search and Ordering

Search and Order [SELECT PRODUCT](#) > [FILTER](#) > [DATE/TIME](#) > **REGION OF INTEREST** > [FORMAT](#) > [DELIVERY METHOD](#) > [CHECK OUT](#)

Orders Status
Help
Feedback

SELECT REGION OF INTEREST



Upper Left Corner
53.5 Lat (deg) -11 Lon (deg)

Lower Right Corner
20 Lat (deg) 18.5 Lon (deg)

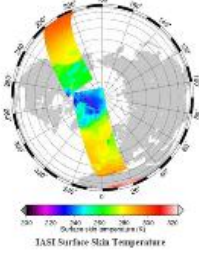
Region
User Defined

Clear Region of Interest

Previous Step Next Step Selected Products: 96 (100 MB) Go to Check Out

Selected Product

IASI GDS Level 1C



IASI Surface Skin Temperature

Hints & Tips

Selected Region of Interest (ROI) will be used to narrow your search to orbits passing over it and as a default for Region Subsetting.

Region Subsetting defaults can be deactivated or modified in step 'FORMAT'.

Number and size of selected products is an estimate.

Copyright 2012 © EUMETSAT. All rights reserved.
European Organisation for the Exploitation of Meteorological Satellites

- Filter the product selected depending on its orbits crossing the ROI.
- Hints & Tips provide additional usability information based on users' experiences.

New Ordering Client: Delivery Format Selection

EUMETSAT Data Centre Online Ordering Client - Web Browser
http://datacentre.eumetsat.int/ordering/

EUMETSAT USER SERVICES CLIENT
EUMETSAT Product Search and Ordering

Search and Order | [SELECT PRODUCT](#) > [FILTER](#) > [DATE/TIME](#) > [REGION OF INTEREST](#) > **FORMAT** > DELIVERY METHOD > CHECK OUT

Orders Status
Help
Feedback

SELECT FORMAT

Format:

| Band Name | Red | Green | Blue |
|-----------|----------------------------------|----------------------------------|----------------------------------|
| VIS 0.6 | <input type="radio"/> | <input type="radio"/> | <input type="radio"/> |
| VIS 0.8 | <input type="radio"/> | <input type="radio"/> | <input type="radio"/> |
| nIR 1.6 | <input type="radio"/> | <input type="radio"/> | <input type="radio"/> |
| IR 3.9 | <input checked="" type="radio"/> | <input type="radio"/> | <input type="radio"/> |
| WV 6.2 | <input type="radio"/> | <input type="radio"/> | <input type="radio"/> |
| WV 7.3 | <input type="radio"/> | <input type="radio"/> | <input type="radio"/> |
| IR 8.7 | <input type="radio"/> | <input checked="" type="radio"/> | <input type="radio"/> |
| IR 9.7 | <input type="radio"/> | <input type="radio"/> | <input checked="" type="radio"/> |
| IR 10.8 | <input type="radio"/> | <input type="radio"/> | <input type="radio"/> |
| IR 12.0 | <input type="radio"/> | <input type="radio"/> | <input type="radio"/> |
| IR 13.4 | <input type="radio"/> | <input type="radio"/> | <input type="radio"/> |

Overlays

Coastlines
 Countries
 Landmarks

Region Subsetting

Subset by Region of Interest

Upper Left Corner
 line/pixel line/pixel

Lower Right Corner
 line/pixel line/pixel

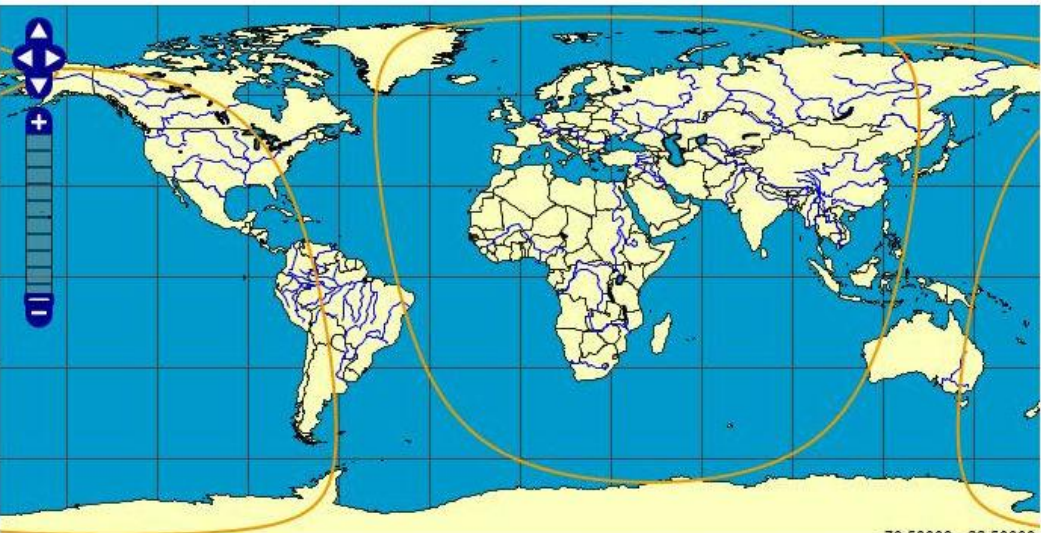
Previous Step | Next Step | Selected Products: 96 (100 MB) | **Details** | Go to Check Out

Copyright 2012 © EUMETSAT. All rights reserved.
European Organisation for the Exploitation of Meteorological Satellites

- Users select the delivery format and ROI subsetting for all products in the order
- “Details” - Examine the details of the products in this order, as sufficient information has been provided to return the ‘filtered’ products from the Data Centre Catalogue (see next slide)

New Ordering Client: Products' Details for this Order

Selected Products Details



Product Details

High Rate SEVIRI Level 1.5 Image Data

| | |
|--|------------------------|
| Product Type | MSG15 |
| Orbit Type | GEO |
| Processing Level | 00 |
| Satellite ID | MSG |
| Product Algorithm Version | 0100 |
| Disposition Flag | Operational Mode |
| Spectral Band IDs | |
| Disposition Mode | STO |
| Instrument ID | SEVIRI instrument(MSG) |
| Product Actual Size | -2147483648 |
| Native Product Format Version | |
| Product Name | |
| Subsatellite Point Start Longitude (deg) | -2147483648 |
| Subsatellite Point End Longitude (deg) | -2147483648 |
| Subsatellite Point Start Latitude (deg) | -2147483648 |
| Subsatellite Point End Latitude (deg) | -2147483648 |

| Satellite | Instrument | Product Type | Start Date | Stop Date | Longitude | Version ID |
|-----------|------------|--------------|---------------------|---------------------|-----------|------------|
| MSG1 | SEVI | MSG15 | 2012/04/24 08:35:08 | 2012/04/24 08:39:15 | 9.5 | 0 |
| MSG1 | SEVI | MSG15 | 2012/04/24 08:40:08 | 2012/04/24 08:44:15 | 9.5 | 0 |
| MSG1 | SEVI | MSG15 | 2012/04/24 08:45:08 | 2012/04/24 08:49:15 | 9.5 | 0 |
| MSG1 | SEVI | MSG15 | 2012/04/24 08:50:09 | 2012/04/24 08:54:16 | 9.5 | 0 |
| MSG1 | SEVI | MSG15 | 2012/04/24 08:55:09 | 2012/04/24 08:59:17 | 9.5 | 0 |
| MSG1 | SEVI | MSG15 | 2012/04/24 09:00:10 | 2012/04/24 09:04:17 | 9.5 | 0 |
| MSG1 | SEVI | MSG15 | 2012/04/24 09:05:10 | 2012/04/24 09:09:17 | 9.5 | 0 |
| MSG1 | SEVI | MSG15 | 2012/04/24 09:10:10 | 2012/04/24 09:14:17 | 9.5 | 0 |
| MSG1 | SEVI | MSG15 | 2012/04/24 09:15:10 | 2012/04/24 09:19:17 | 9.5 | 0 |
| MSG1 | SEVI | MSG15 | 2012/04/24 09:20:10 | 2012/04/24 09:24:17 | 9.5 | 0 |
| MSG1 | SEVI | MSG15 | 2012/04/24 09:25:10 | 2012/04/24 09:29:17 | 9.5 | 0 |
| MSG1 | SEVI | MSG15 | 2012/04/24 09:30:10 | 2012/04/24 09:34:17 | 9.5 | 0 |

(delete products by selecting and pressing "Delete" key)

Browse Image

Copyright 2012 © EUMETSAT. All rights reserved.
European Organisation for the Exploitation of Meteorological Satellites

- Users should use this page to ensure their filtering criteria contains the products expected;
- Products in the order are split into lists;
- Users can easily browse these lists and select / delete any product in them;
- Metadata for the selected product is displayed. A browse Image can be displayed

New Ordering Client: Delivery Method Selection

EUMETSAT Data Centre Online Ordering Client - Web Browser

http://datacentre.eumetsat.int/ordering/

EUMETSAT USER SERVICES CLIENT
EUMETSAT Product Search and Ordering

Search and Order
Orders Status
Help
Feedback

[SELECT PRODUCT](#) > [FILTER](#) > [DATE/TIME](#) > [REGION OF INTEREST](#) > [FORMAT](#) > **DELIVERY METHOD** > CHECK OUT

DELIVERY METHOD

Delivery Method

On Media Online HTTP Direct FTP

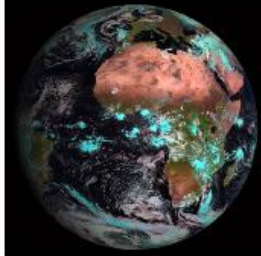
Delivery Options

Media Type: DVD

Compression: GZIP

Selected Product

High Rate SEVIRI Level 1.5 Image Data



Hints & Tips

Previous Step Next Step Selected Products: 96 (100 MB) Details Go to Check Out

Copyright 2012 © EUMETSAT. All rights reserved.
European Organisation for the Exploitation of Meteorological Satellites

- Users select the preferred delivery method and whether data compression should be applied to their order.

New Ordering Client: Place the Data Centre Order

EUMETSAT Data Centre Online Ordering Client - Web Browser

http://datacentre.eumetsat.int/ordering/

EUMETSAT USER SERVICES CLIENT
EUMETSAT Product Search and Ordering

Search and Order [SELECT PRODUCT](#) > [FILTER](#) > [DATE/TIME](#) > [REGION OF INTEREST](#) > [FORMAT](#) > [DELIVERY METHOD](#) > **CHECK OUT**

Orders Status
Help
Feedback

CHECK OUT

Delivery Address Invisible if order is online.

| | |
|-----------------|------------------|
| Address | EUMETSAT Allee 1 |
| City | Darmstadt |
| Post Code | 64295 |
| State or Region | Hessen |
| Country | Germany |

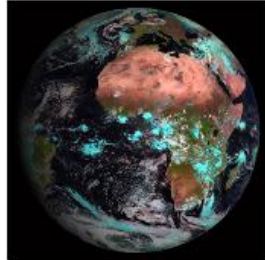
Total Order Size: 838 MB

Notify Order Completion by E-mail

[Previous Step](#) **Selected Products: 96 (100 MB)** [Details](#) [Place Your Order](#)

Copyright 2012 © EUMETSAT. All rights reserved.
European Organisation for the Exploitation of Meteorological Satellites

Selected Product
High Rate SEVIRI Level 1.5 Image Data



Hints & Tips

- To submit the order for processing, select the “Place Your Order” button

New Ordering Client: Order Status

EUMETSAT Data Centre Online Ordering Client - Web Browser

http://datacentre.eumetsat.int/ordering/

EUMETSAT USER SERVICES CLIENT
EUMETSAT Product Search and Ordering

Search and Order

Orders Status


Help

Feedback

| Order ID | Product | #Items | Size | Submission Date | Status |
|----------|----------|--------|-------|-----------------|------------|
| 25365 | MSG15 | 350 | 200MB | 20-01-2012 | COMPLETED |
| 26896 | MSG15 | 20 | 50MB | 30-01-2012 | COMPLETED |
| 35120 | IASxxx1C | 2 | 1GB | 05-04-2012 | PROCESSING |
| 36458 | IASxxx1C | 1 | 500MB | 07-04-2012 | PROCESSING |

Ordered Product Details

High Rate SEVIRI Level 1.5 Image Data



Rectified (level 1.5) Meteosat SEVIRI image data. The data is transmitted as High Rate transmissions in 12 spectral channels. Level 1.5 image data corresponds to the geolocated and radiometrically pre-processed image data, ready for further processing, e.g. the extraction of meteorological products. Any spacecraft specific effects have been removed, and in particular, linearisation and equalisation of the image radiometry has been performed for all SEVIRI channels. The on-board blackbody data has been processed. Both radiometric and geometric quality control information is included.

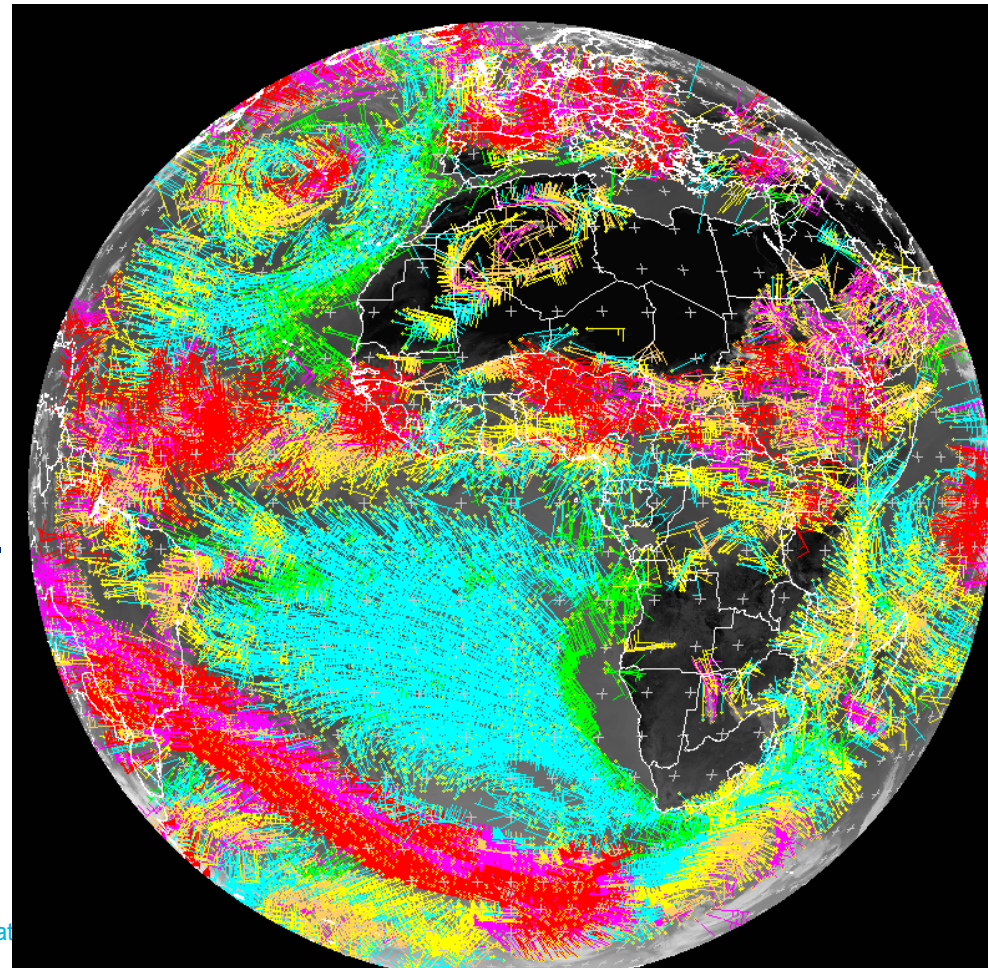
Cancel Selected Order Open Online Delivery Page Details **Clone Selected Order**

Copyright 2012 © EUMETSAT. All rights reserved.
European Organisation for the Exploitation of Meteorological Satellites

- Users can track the status of their order(s) from this page.
- It also provides the order history for the user
- For convenience, previous orders can be cloned for the creation of new 'similar' orders.

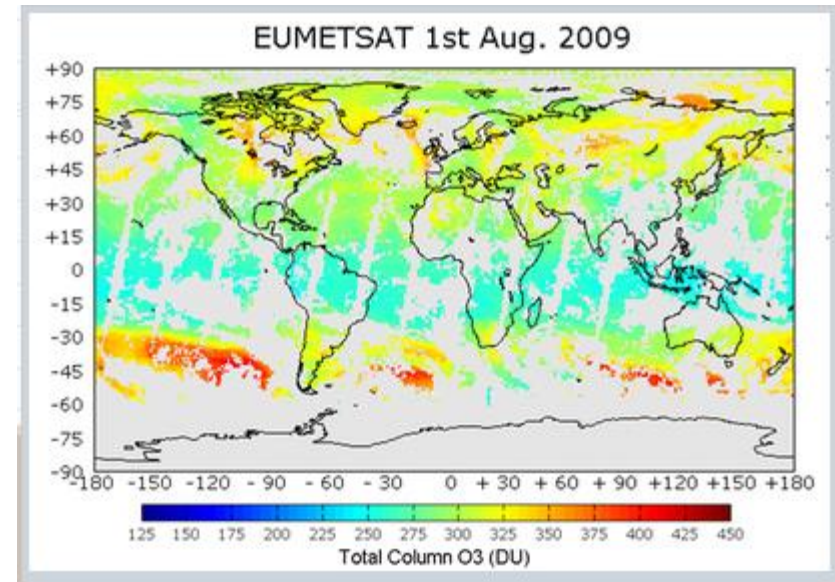
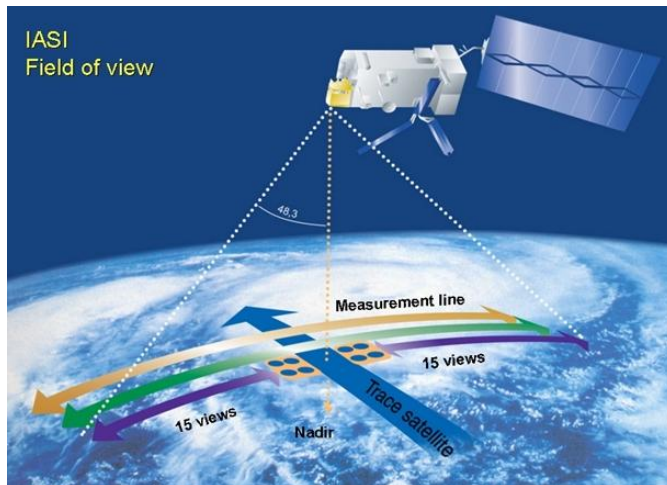
Reprocessed Data

- Meteosat Second Generation Level 1.5 image data 2004-2012 products:
 - Atmospheric Motion Vectors;
 - All Sky Radiances;
 - Clear Sky Radiances;
 - Cloud Analysis;
 - Cloud Mask;
 - Cloud Top Height;
 - Divergence Product;
 - Tropospheric Humidity;
 - High Resolution Precipitation Index.

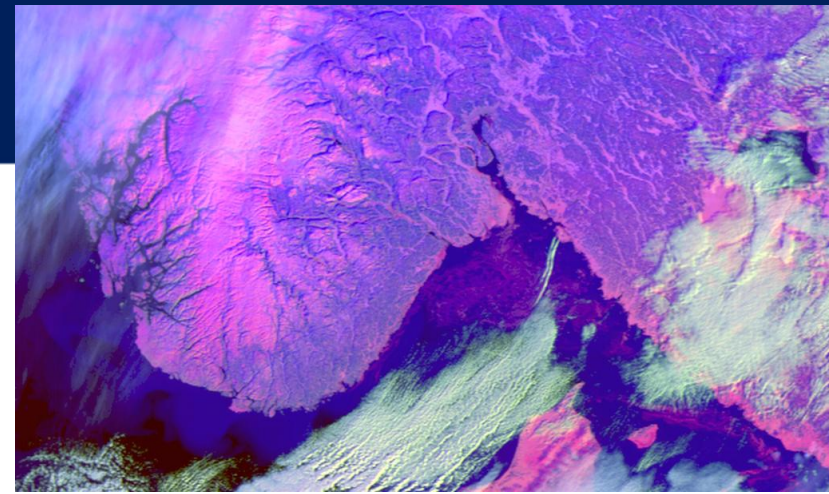


Reprocessed Data

- EUMETSAT Polar System (LEO) Satellites:
 - ASCAT (Metop A);
 - Radio Occultation (GPS data for ROM SAF -> NWP);
 - AVHRR Polar Winds (Metop A);
 - Total Ozone (GOME, IASI, AVHRR).



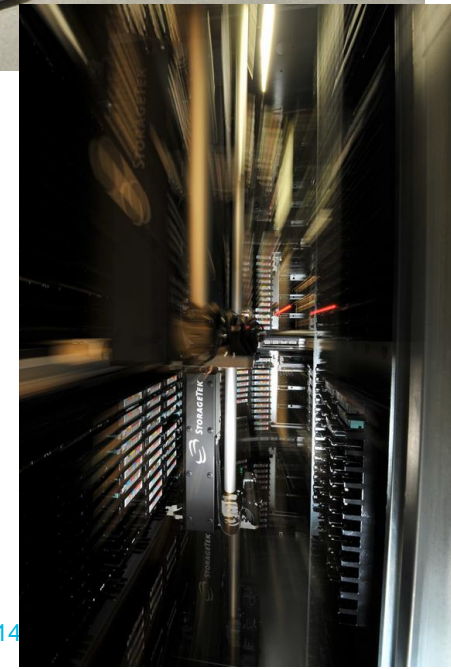
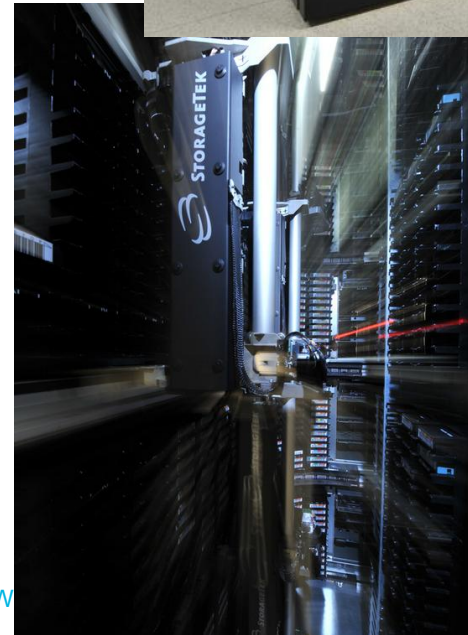
Reprocessed Data



- LEO Metop A:
 - ASCAT (Advanced SCATterometer) prime objective is to measure wind speed over the oceans;
 - AVHRR (Advanced Very High Resolution Radiometer) – multi-purpose imaging instrument used for global monitoring of cloud cover, sea surface temperature, ice, snow and vegetation cover characteristics, aerosols and fire detection;
 - IASI (Infrared Atmospheric Sounding Interferometer) mission is to provide temperature and humidity profiles of troposphere and lower stratosphere;
 - GOME-2 (Global Ozone Monitoring Experiment-2) is used to get detailed picture of total atmospheric content of ozone and the vertical ozone profile in the atmosphere.

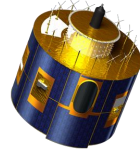
Content of Presentation

1. Overview of the Data Centre
2. Recently implemented enhancements:
 - User Ordering Feedback Mechanism
 - “Fast Track” Ordering
 - NetCDF as a new delivery format
3. Forthcoming enhancements:
 - New Web based Ordering Client
 - Hardware Upgrades
 - Reprocessed data
4. **Data access**

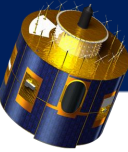


Data Centre - Data Holdings

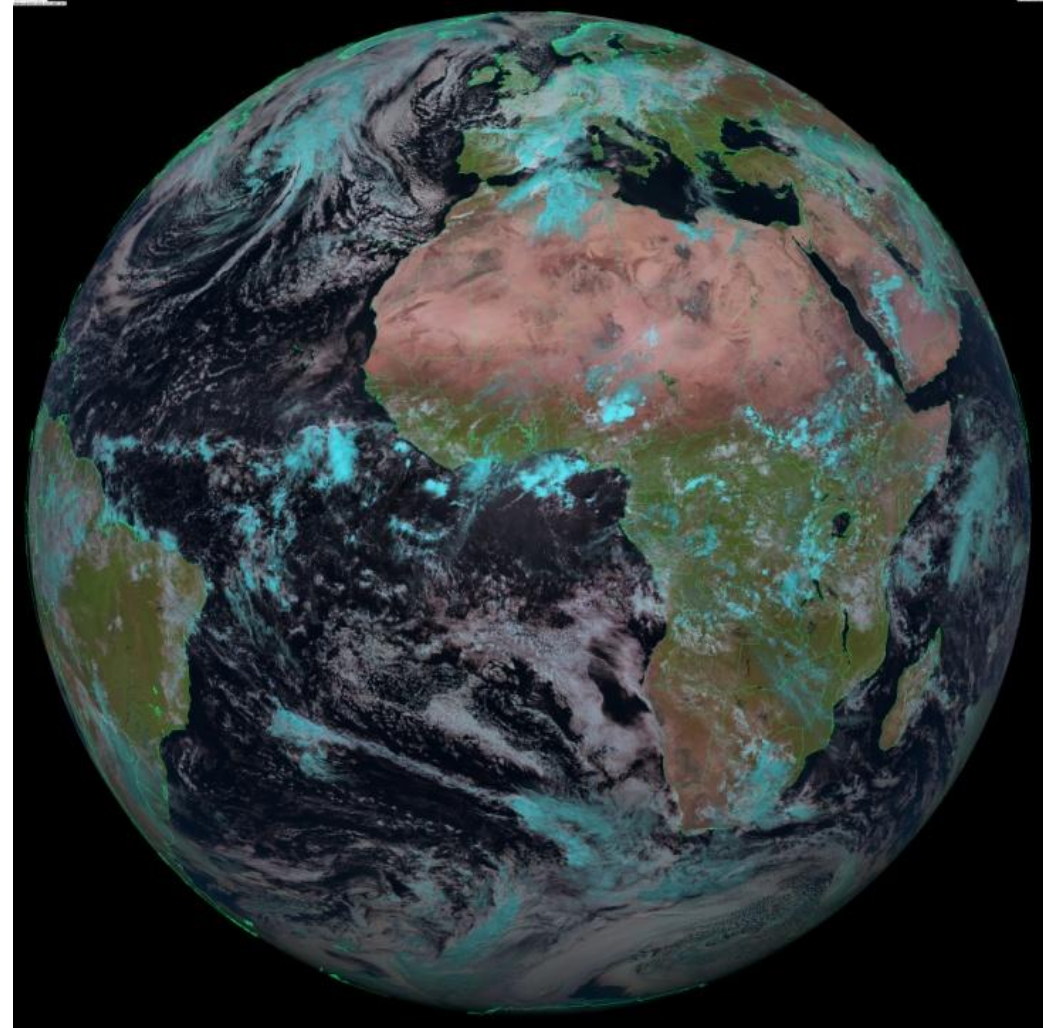
- **Meteosat data since 1981;**



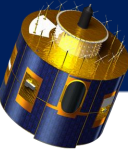
Data Centre - 0 degree Service



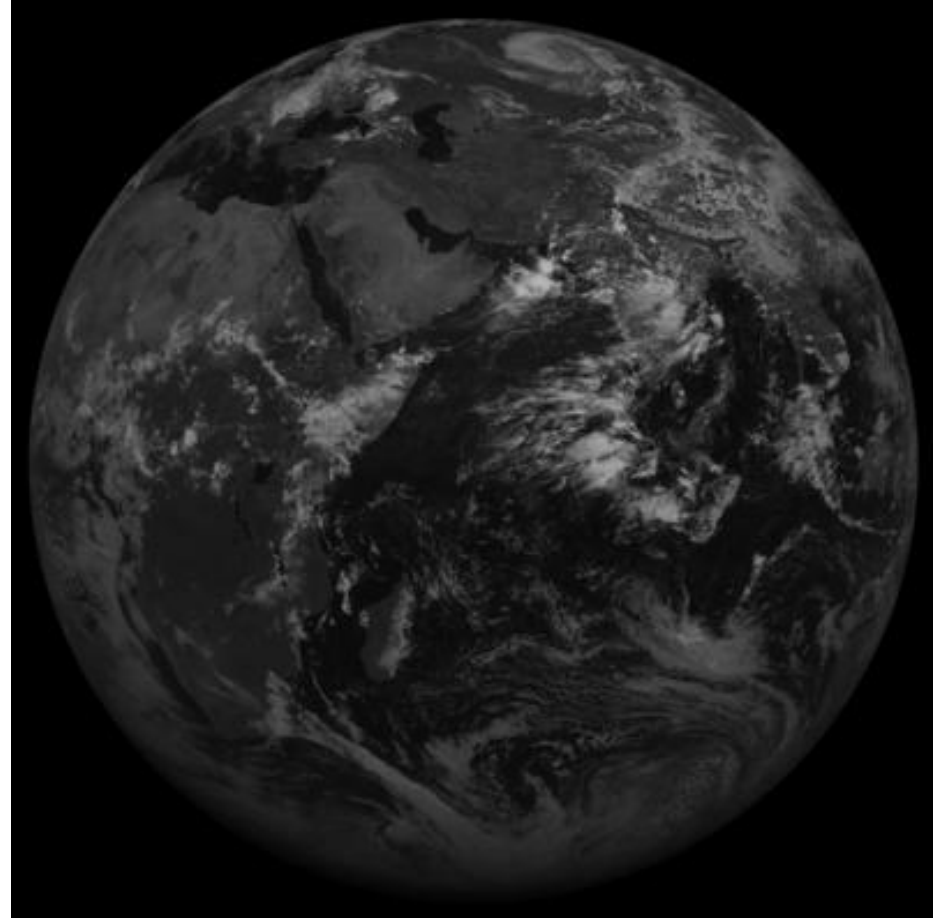
- **Meteosat** data since **1981** - radiances and derived meteorological products from geostationary satellites, which are positioned over Europe – 0 degree, 36000 km;
- Meteosat-10 (MSG-3);
- High Rate SEVIRI Image Data in 12 spectral bands;
- Resolution (11ch. - 3km at the sub-satellite point, HRV – 1km);
- Full Earth Scan every 15min (11ch. – 8 segments, HRV – 24);



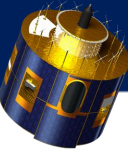
Data Centre - Indian Ocean Data Coverage Service



- **Meteosat** data since **1998** - radiances and derived meteorological products from geostationary satellite, which is positioned over Indian Ocean;
- Meteosat-7 (MFG);
- MVIRI Image Data in 3 spectral bands;
- Data every 30 min;
- Resolution (WV and TIR – 5 km, VIS – 2.5 km);
- Wind and water vapour data for NWP;
- Information for tropical cyclones and dust storm monitoring;



Data Centre - Rapid Scan Service

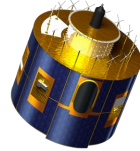


- **Meteosat** data since **2001**;
- Meteosat-9 (MSG-2);
- Rapid Scan High Rate SEVIRI Image Data;
- Every 5 min;
- 12 channels – not all segments;

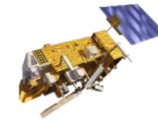


Data Centre - Data Holdings

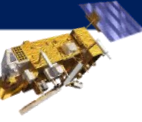
- **Meteosat** data since **1981**;



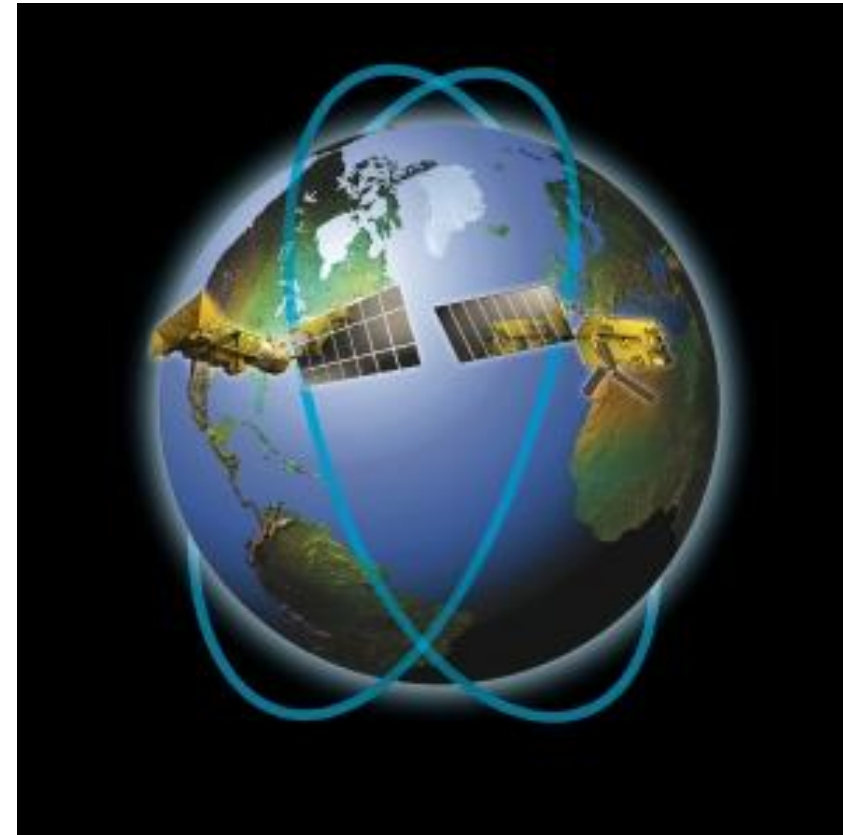
- **Metop-A** and **Metop-B** data since **2007**;



Data Centre - Low Earth Orbit

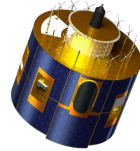


- **Metop-A** and **Metop-B** data since **2007**, including global and regional products of the various sensors, i.e. AMSU, ASCAT, AVHRR, GOME-2, GRAS, HIRS, IASI, MHS;
- 817 km;
- Satellites fly in complementary orbits to ensure global data coverage at intervals of less than 6 hours;

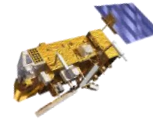


Data Centre - Data Holdings

- **Meteosat** data since **1981**;



- **Metop-A** and **Metop-B** data since **2007**;



- **Jason- 2** data since **2008**, including various sea surface altimetry products;



- **SAF** data: product entries or catalogue collections (Metadata) from the EUMETSAT network of Satellite Application Facilities (SAFs) since **2008**, including climate, land, oceanographic and atmospheric;
- **Data from International Partners**, including NOAA AVHRR data since **2006**.

Flowchart – accessing Data at EUMETSAT

Accessing EUMETSAT DATA

Do you want information on what EUMETSAT Data is Available?

YES

Use the Product Navigator to discover what data is available

Register with the Earth Observation (EO) Portal

Do you want Near Real Time (NRT) Data Delivery?

YES

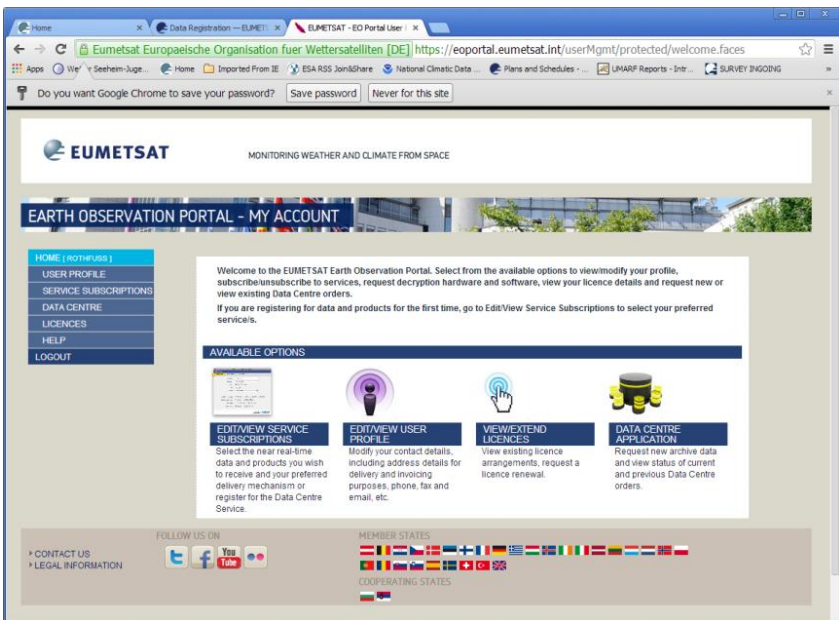
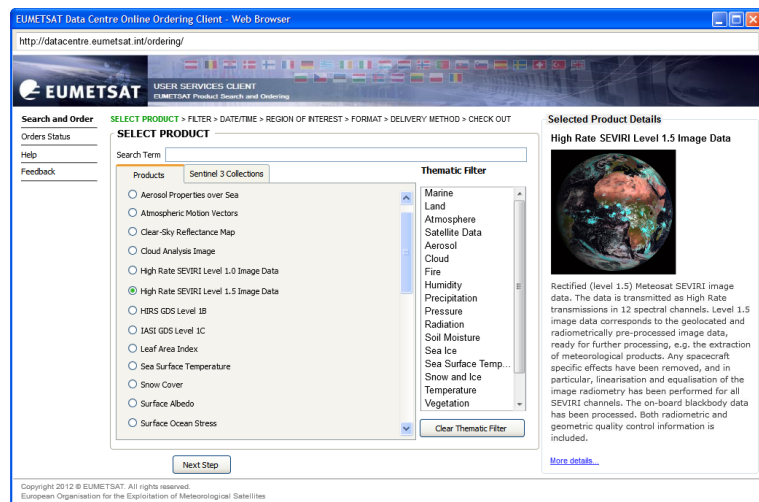
Subscribe to the Licensed Dissemination Service EUMETCAST

Subscribe to the FREE Data Centre Service

Run the Online Ordering Application to submit orders

END

NO



Accessing Data from the Data Centre Archive

- **Anyone** can register using the EO Portal to become a U-MARF user;
- EO Portal URL - <http://eoportal.eumetsat.int> into your browser;
- **User should subscribe** to the Data Centre Service subscription;
- This service offers an **Online Ordering Application** where EUMETSAT data can be queried and ordered;
- The **Data is free** but there is **no guarantee on delivery times**;
- User guides, training slides and general information about the Data Centre can be found under:

<http://www.eumetsat.int/Home/Main/DataAccess/EUMETSATDataCentre/>

Links

- **EUMETSAT:** <http://www.eumetsat.int>
- **Helpdesk:** ops@eumetsat.int
- **Data and Products:** <http://www.eumetsat.int/Home/Main/DataProducts/>
- **EO Portal:** <http://eoportal.eumetsat.int/>
- **Product Navigator:** <http://navigator.eumetsat.int/>
- **EUMETCast:** <http://www.eumetsat.int/Home/Main/DataAccess/EUMETCast>
- **Data Centre:** <http://www.eumetsat.int/Home/Main/DataAccess/EUMETSATDataCentre>

Registering on Earth Observational Portal

<http://eoportal.eumetsat.int>



MONITORING WEATHER AND CLIMATE FROM SPACE

EARTH OBSERVATION PORTAL - MY ACCOUNT

HOME

LOGIN

HELP

Authentication

Welcome to the Earth Observation portal. Please login to access your account.

PLEASE LOGIN

Please enter your user ID and password to login

User ID: *

Password: *

Please note the fields marked with * are mandatory.

[▶ FORGOTTEN YOUR PASSWORD?](#)

[▶ NEW USER - CREATE NEW ACCOUNT](#)

[▶ LOGIN](#)

FOLLOW US ON



[▶ CONTACT US](#)
[▶ LEGAL INFORMATION](#)

MEMBER STATES



COOPERATING STATES



MONITORING WEATHER AND CLIMATE FROM SPACE



THANK YOU!

Kristina Petraityte

kristina.petraityte@eumetsat.int

